

# TREES, THE DI WAY

THANKS TO SUSIE ROGERS FOR GIVING ME FOCUS IN  
THE AMAZING PROP STORAGE AREAS AT GLOBAL FINALS



THE FOLLOWING  
SLIDES SHOW A  
FEW AWESOME  
INTERPRETATIONS  
OF FOLIAGE,  
FROM DI TEAMS  
AT GLOBAL  
FINALS



PAPER CHAINS,  
AND PAPER TUBES  
GLUED TO A  
ROUND FRAME



REAL BARK AND  
ORIGAMI  
BLOSSOMS  
ON CHICKEN WIRE  
OVER A WOOD  
FRAME - WHEELS  
ON FRAME BASE





LOOK CLOSE - TORN CARDBOARD GLUED TO A WOOD FRAME





TREE ROTATES TO REVEAL A COSTUMED CHARACTER THAT EMERGES FROM THE BARK.



**Simple cardboard and the appearance of greenery. Rope and fabric, painted or dyed adds to the texture of the tree. You can't see it, but the tree was mounted to an old skate board for easy movement.**







The leaves are cut from felt and glued to an opened umbrella. The umbrella handle was put in a pole, or more likely a student made box that had been covered in fabric.

Lightweight and collapsible.





## FLAT TREES FRAME THE SET

Trees made from softened cardboard for bark and paper flowers – maybe made from Mod Pod or sugar water that stiffens.

Adds a 3 dimensional appearance.





## **MOLDED FIBER WALL WITH A TREE AS THE FOCAL POINT**

Molded fiber squares typically used as a packing material used to create an unusual set piece. The squares were mounted to thin plywood and painted to create a colorful background. The leaves were individually painted with metallic paint or covered in foil. An opening made from a mailbox contraption was part of the story.



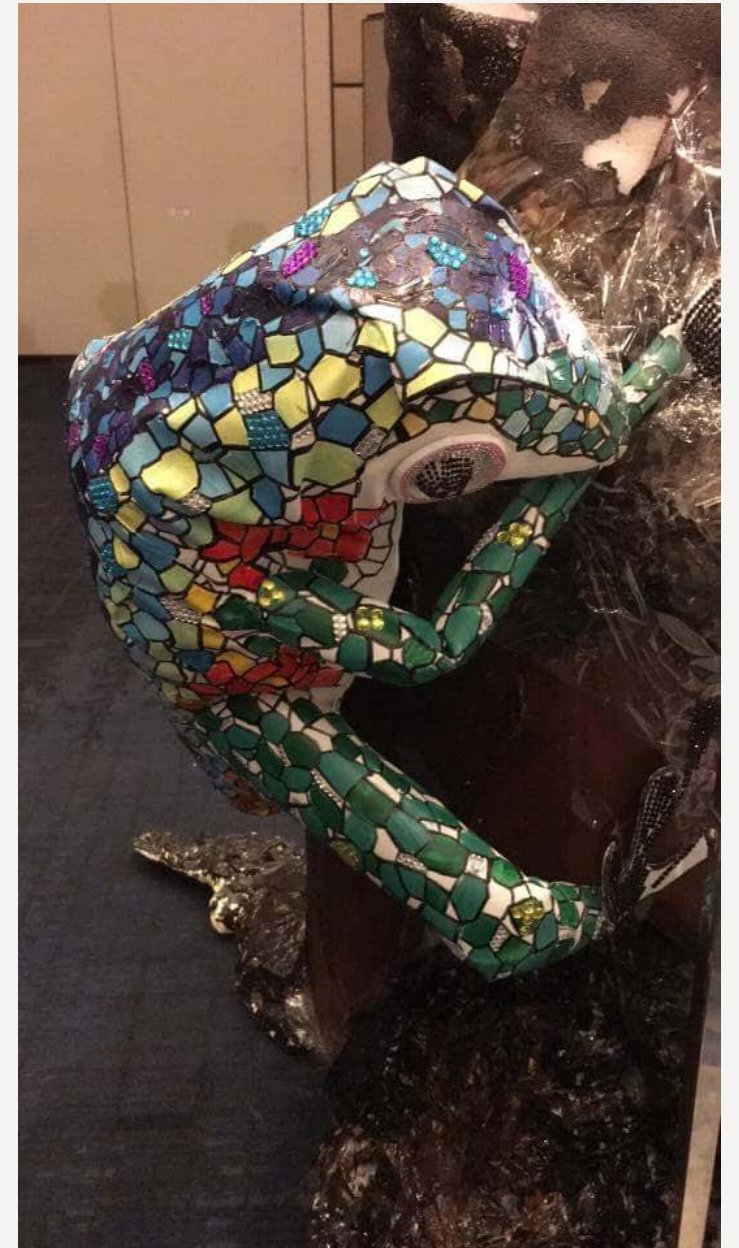


## TREES FROM CARBOARD TUBES

These mailing tubes were painted to give the appearance of tree trunks. The branches are paper towel tubes that pull out so the tubes pack flat.

Enhancing a tree with a character or other visual effect.

The owl is molded as part of the tree while this beautiful mosaic frog hangs off one side.





Paper mache tree form built over a chickenwire frame, twisted kraft paper and paper chains create an interesting look.





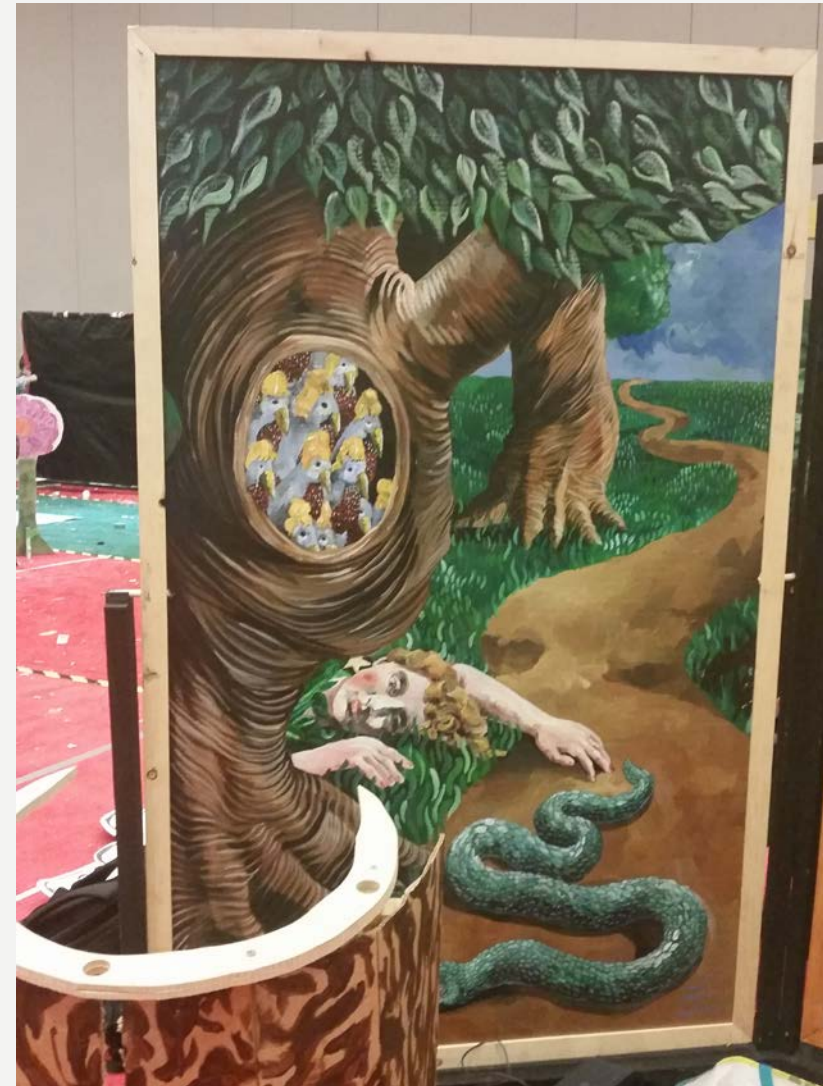
## 3-DIMENSIONAL TREES

Tree trunks are just painted cardboard.

The leaves are paper maché formed over balloons to give a poofy look. Once the paper maché dries, the balloons can be popped.



# TWO EXAMPLES OF TREES PAINTED ON A SET PIECE.



THE LEAVES  
WERE YARN OR  
RAFFIA  
BUNDLES  
HANGING OVER  
PVC. THE 4  
BRANCHES  
COLLAPSE FOR  
GETTING  
THROUGH  
DOOR FRAMES.







## **3-D ON A FLAT BACKGROUND**

This tree is painted onto the backdrop but 2 or 3 floating leaves give it interest and character.



**A HOLLOW TREE THAT  
ACCOMMODATES A  
TEAM MEMBER**

Mossy branches on a wire frame covered in craft paper. This tree held a team member.



Recycled plastic packaging tubes filled with tissue paper add so much texture to these props. The flowers are also painted packaging materials.



# BIG IMPACT! TISSUE PAPER LEAVES AND FLOWERS.







THESE TREES ROTATED TO  
DEPICT THE 4 SEASONS OR  
MOVEMENT IN THE WIND.

